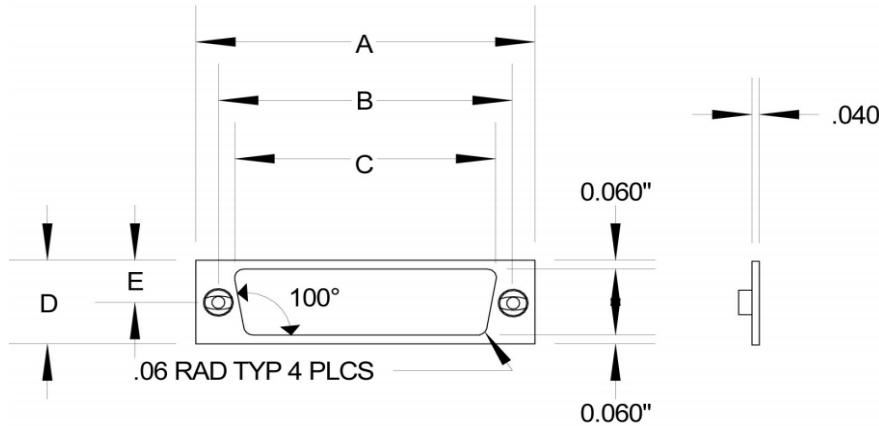




**Stroco Manufacturing, Inc.**  
 628 Lambert Pointe Drive  
 Hazelwood, MO 63042  
 ph. (800) 489-6050  
 fax (314) 522-8805  
 sales@stroco.com



STROCO P/N	SHELL SIZE	T THR'D UNCJ-3B	"A" (+/- .005)	"B" (+.003/- .000)	"C" (±.005)	"D" (2XE) (±.005)	"E" (+.003/- .000)
CSD-1	9	4-40	1.270	0.984	0.784	0.57	0.285
CSD-2	15	4-40	1.598	1.312	1.112	0.57	0.285
CSD-3	25	4-40	2.138	1.852	1.652	0.57	0.285
CSD-4	37	4-40	2.786	2.500	2.300	0.57	0.285
CSD-5	50	4-40	2.692	2.406	2.206	0.68	0.340

**SPECIFICATIONS**

**MATERIAL:** Retainer- Aluminum alloy, 6061-T6, .037" (±.005) thickness  
 Nut- Self-Locking, clinch type, corrosion resistant alloy steel per AMS5640 (Type 303)  
 Performance per MIL-DTL-32258

**FINISH:** Retainer- Alodine per MIL-DTL-5541  
 Nut- Per NASM45938 Dry Film Lube applied per MIL-PRF-46010

DIMENSIONS IN INCHES: TOLERANCES UNLESS OTHERWISE SPECIFIED: X.XX +/- .030"; X.XXX +/- .010"; ANGLES +/- .5°

DOCUMENT AND ITS CONTENTS ARE PROPRIETARY INFORMATION TO STROCO AND ITS AFFILIATES. USE WITHOUT AUTHORIZATION IS PROHIBITED.

CAGE NO. 19904	TITLE: <b>NUT PLATE</b>	PART NUMBER <b>CSD</b>
	  	REV A 09/01/2021
DRAWING FOR INTERNAL USE ONLY		