

STROCO P/N	SHELL SIZE	T THR'D UNC-3B	"A" (+/- .005)	"B" MAX	"C" MIN	"D"	E (+/- .005)	F REF	"G" MAX	MILITARY M85049/96-
S85049/96-3	3	.112-40	0.625	0.940	0.305	.106/.166	0.312	0.150	0.310	M85049/96-3
S85049/96-7	7	.112-40	0.719	1.034	0.329	.106/.166	0.359	0.149	0.308	M85049/96-7
S85049/96-8	8	.112-40	0.594	0.906	0.262	.106/.166	0.297	0.148	0.306	M85049/96-8
S85049/96-10	10	.112-40	0.719	1.034	0.344	.106/.166	0.359	0.149	0.308	M85049/96-10
S85049/96-12	12	.112-40	0.812	1.124	0.410	.106/.166	0.406	0.148	0.306	M85049/96-12
S85049/96-14	14	.112-40	0.906	1.218	0.492	.106/.166	0.453	0.148	0.306	M85049/96-14
S85049/96-16	16	.112-40	0.969	1.295	0.532	.106/.166	0.484	0.149	0.308	M85049/96-16
S85049/96-18	18	.112-40	1.062	1.405	0.595	.106/.166	0.531	0.164	0.338	M85049/96-18
S85049/96-19	19	.112-40	0.906	1.218	0.461	.106/.166	0.453	0.148	0.306	M85049/96-19
S85049/96-20	20	.112-40	1.156	1.550	0.657	.106/.166	0.578	0.177	0.364	M85049/96-20
S85049/96-22	22	.112-40	1.250	1.680	0.724	.106/.166	0.625	0.195	0.400	M85049/96-22
S85049/96-24	24	.138-32	1.375	1.800	0.782	.123/.183	0.687	0.193	0.396	M85049/96-24
S85049/96-25	25	.138-32	1.500	1.906	0.814	.123/.183	0.750	0.179	0.368	M85049/96-25
S85049/96-27	27	.112-40	0.969	1.281	0.782	.106/.166	0.484	0.149	0.308	M85049/96-27
S85049/96-28	28	.138-32	1.562	2.015	0.895	.123/.183	0.781	0.219	0.448	M85049/96-28
S85049/96-32	32	.138-32	1.750	2.327	1.016	.123/.183	0.875	0.281	0.572	M85049/96-32
S85049/96-36	36	.138-32	1.938	2.515	1.141	.123/.183	0.969	0.281	0.572	M85049/96-36
S85049/96-37	37	.112-40	1.187	1.515	0.625	.106/.166	0.593	0.157	0.324	M85049/96-37
S85049/96-61	61	.112-40	1.437	1.827	0.732	.106/.166	0.718	0.188	0.396	M85049/96-61

### SPECIFICATIONS

**MATERIAL:** Retainer- Aluminum alloy, 6061-T6 per AMS 4027, .040" (+.003/-.003) thickness  
 Nut- Self-Locking, clinch type, corrosion resistant alloy steel per AMS5640 (type 303)  
 Performance per MIL-DTL-32258

**FINISH:** Retainer- Alodine per MIL-DTL-5541 CI 1A  
 Optional- Epoxy Polyamide primer applied per MIL-PRF-23377  
 (Add "-A" to the end of the part number to order the optional primer)  
 Nut- Per NASM45938 with dry film lubricant applied per MIL-PRF-46010

**MARKING:** Parts to be marked with the respective M85049/96-XXX part number and 19904, if there is enough space.

DIMENSIONS IN INCHES: TOLERANCES UNLESS OTHERWISE SPECIFIED: X.XX +/--.030"; X.XXX +/--.010"; ANGLES +/--.05"

DOCUMENT AND ITS CONTENTS ARE PROPRIETARY INFORMATION TO STROCO AND ITS AFFILIATES. USE WITHOUT AUTHORIZATION IS PROHIBITED.

<u>CAGE NO.</u> 19904	<u>TITLE: NUT PLATE</u>   	<u>PART NUMBER</u> <b>S85049/96-XX</b>
DRAWING FOR INTERNAL USE ONLY		REV D 06/10/2021

F

E

D

C

B

A

6

6



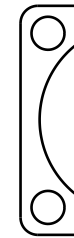
M85049-96-7A



M85049-96-8



M85049-96-10



M85049-96-14



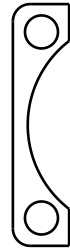
M85049-96-14A

5

5

4

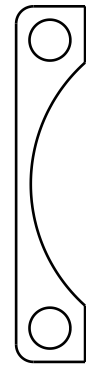
4



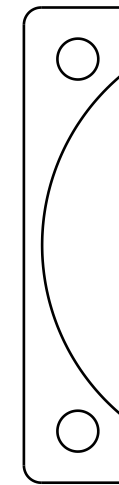
M85049-96-16



M85049-96-24



M85049-96-25



M85049-96-36

3

3

2

2

1

1

F

A

TITLE BLOCK REV. A 06/04/18

DRAWN BY: SMS		DATE: 08/30/21	REV: D	<b>STROCO MANUFACTURING, INC.</b> <b>REFERENCE ONLY</b>
PART NO: M85049/96		SCALE 1:1 SHEET 1 OF 1	VISUAL AID DISPLAYING 1:1 VIEWS OF THE FORMED PART. NOT TO BE USED FOR INSPECTION PURPOSES	