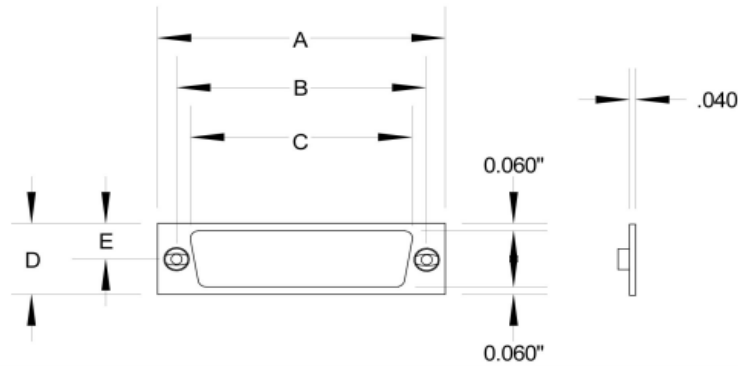




Stroco Manufacturing, Inc.
 628 Lambert Pointe Drive
 Hazelwood, MO 63042
 ph. (800) 489-6050
 fax (314) 522-8805
 sales@stroco.com



STROCO P/N	SHELL SIZE	T THR'D UNCJ-3B	"A" ±.010	"B" ±.003	"C" ±.010	"D=2XE" ±.010	E (+/- .005)
SMD-9	9	2-56	0.775	0.565	0.390	0.298	0.149
SMD-15	15	2-56	0.925	0.715	0.540	0.298	0.149
SMD-21	21	2-56	1.075	0.865	0.690	0.298	0.149
SMD-25	25	2-56	1.175	0.965	0.790	0.298	0.149
SMD-31	31	2-56	1.325	1.115	0.930	0.298	0.149
SMD-37	37	2-56	1.475	1.265	1.090	0.298	0.149
SMD-51	51	2-56	1.425	1.215	1.040	0.341	0.170
SMD-100	100	2-56	2.160	1.800	1.432	0.384	0.192

SPECIFICATIONS

MATERIAL: Retainer- Aluminum alloy, 2024-T3 OR 6061-T6, .040" (+.003/-.003) thickness
 Nut- Self-Locking, clinch type, corrosion resistant alloy steel per AMS5640 (type 303)
 Performance per MIL-DTL-32258

FINISH: Retainer- Alodine per MIL-DTL-5541
 Nut- Per NASM45938 with dry film lubricant applied per MIL-PRF-46010

DIMENSIONS IN INCHES: TOLERANCES UNLESS OTHERWISE SPECIFIED: X.XX +/- .030"; X.XXX +/- .010"; ANGLES +/- .05*

DOCUMENT AND ITS CONTENTS ARE PROPRIETARY INFORMATION TO STROCO AND ITS AFFILIATES. USE WITHOUT AUTHORIZATION IS PROHIBITED.

CAGE NO. 19904	TITLE: NUT PLATE DRAWING FOR INTERNAL USE ONLY	PART NUMBER SMD-XX
		REV A 07/18/2021