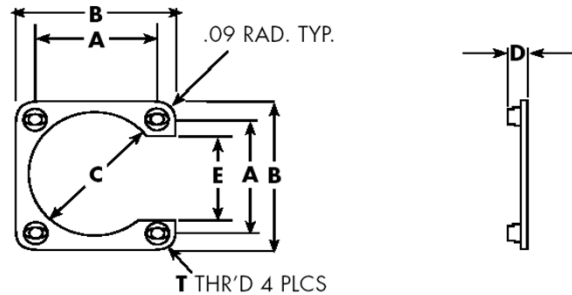




Stroco Manufacturing, Inc.  
 628 Lambert Pointe Drive  
 Hazelwood, MO 63042  
 ph. (800) 489-6050  
 fax (314) 522-8805  
 sales@stroco.com



STROCO P/N	SHELL SIZE	T THR'D UNC-3B	"A" (+/- .003)	"B" (+/- .015)	"C" (+.015/- .000)	"D"	"E" (+.000/- .030)
S922-3C	3	.112-40	.625	0.925	0.641	.106/.166	0.325
S922-6C	6	.112-40	.469	0.755	0.366	.106/.166	0.183
S922-7C	7	.112-40	.719	1.019	0.688	.106/.166	0.433
S922-8C	8	.112-40	0.594	0.880	0.570	.106/.166	0.308
S922-10C	10	.112-40	0.719	1.019	0.720	.106/.166	0.433
S922-12C	12	.112-40	0.812	1.104	0.855	.106/.166	0.530
S922-14C	14	.112-40	0.906	1.198	0.984	.106/.166	0.624
S922-16C	16	.112-40	0.969	1.280	1.094	.106/.166	0.687
S922-18C	18	.112-40	1.062	1.406	1.220	.106/.166	0.780
S922-19C	19	.112-40	0.906	1.192	0.953	.106/.166	0.620
S922-20C	20	.112-40	1.156	1.535	1.345	.106/.166	0.874
S922-22C	22	.112-40	1.250	1.665	1.478	.106/.166	0.968
S922-24C	24	.138-32	1.500	1.891	1.560	.123/.183	1.000
S922-25C	25	.138-32	1.500	1.891	1.658	.123/.183	1.125
S922-27C	27	.112-40	0.969	1.255	1.094	.106/.166	0.683
S922-28C	28	.138-32	1.562	2.000	1.820	.123/.183	1.125
S922-32C	32	.138-32	1.750	2.312	2.062	.123/.183	1.188
S922-36C	36	.138-32	1.938	2.500	2.312	.123/.183	1.375
S922-37C	37	.112-40	1.187	1.500	1.281	.106/.166	0.874
S922-61C	61	.112-40	1.437	1.812	1.594	.106/.166	1.062

**SPECIFICATIONS**

**MATERIAL:** Retainer- Aluminum alloy, 6061-T6 per QQ-A-250/11, .037" (+.005/ -.005) thickness  
 Nut- Self-Locking, clinch type, corrosion resistant alloy steel per AMS5640 (type 303)  
 Performance per MIL-N-25027

**FINISH:** Retainer- Alodine per MIL-C-5541 CI 1A  
 Optional- Epoxy Polyamide primer applied per MIL-P-23377  
 Nut- Per MIL-N-45938 with dry film lubricant applied per MIL-L-46010

**NOTES:** The A, B, C, and E dimensions are to be measured in the restrained position.  
 Parts to be marked with the respective S922-XXC part number, if there is enough space.

DIMENSIONS IN INCHES: TOLERANCES UNLESS OTHERWISE SPECIFIED: X.XX +/- .030"; X.XXX +/- .010"; ANGLES +/- .05\*

DOCUMENT AND ITS CONTENTS ARE PROPRIETARY INFORMATION TO STROCO AND ITS AFFILIATES, USE WITHOUT AUTHORIZATION IS PROHIBITED.

CAGE NO. 19904	TITLE: NUT PLATE   	PART NUMBER S922-XXC
	DRAWING FOR INTERNAL USE ONLY	

[www.stroco.com](http://www.stroco.com)

**Exceeding** Your Expectations