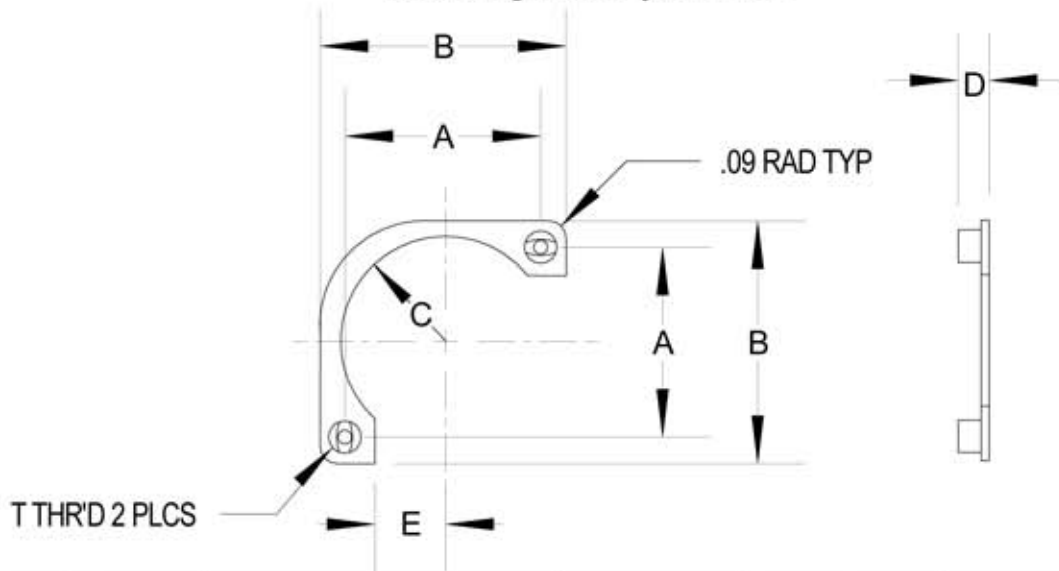


STROCO

Exceeding Your Expectations



STROCO P/N	SHELL SIZE	T THR'D UNC-3B	"A" (+/- .003)	"B" (+/- .015)	"C" (+.010/- .000)	"D"	"E" (+.000/- .010)
S982-3	3	.112-40	.625	0.925	0.320	.106/.166	0.162
S982-6	6	.112-40	.469	0.755	0.183	.106/.166	0.091
S982-7	7	.112-40	.719	1.019	0.344	.106/.166	0.216
S982-8	8	.112-40	0.594	0.880	0.277	.106/.166	0.154
S982-10	10	.112-40	0.719	1.019	0.344	.106/.166	0.216
S982-12	12	.112-40	0.812	1.098	0.414	.106/.166	0.263
S982-14	14	.112-40	0.906	1.192	0.476	.106/.166	0.310
S982-16	16	.112-40	0.969	1.255	0.546	.106/.166	0.341
S982-18	18	.112-40	1.062	1.348	0.592	.106/.166	0.388
S982-19	19	.112-40	0.906	1.192	0.476	.106/.166	0.310
S982-20	20	.112-40	1.156	1.500	0.652	.106/.166	0.432
S982-22	22	.112-40	1.250	1.593	0.714	.106/.166	0.453
S982-24	24	.138-32	1.375	1.750	0.780	.123/.183	0.500
S982-25	25	.138-32	1.500	1.812	0.791	.123/.183	0.531
S982-27	27	.112-40	0.969	1.255	0.547	.106/.166	0.341
S982-28	28	.138-32	1.562	2.000	0.910	.123/.183	0.562
S982-32	32	.138-32	1.750	2.312	1.031	.123/.183	0.594
S982-36	36	.138-32	1.938	2.500	1.156	.123/.183	0.687
S982-37	37	.112-40	1.187	1.500	0.640	.106/.166	0.437
S982-61	61	.112-40	1.437	1.812	0.797	.106/.166	0.531

Specifications

MATERIAL: Retainer- Aluminum alloy, 2024-T3 or 6061-T6, .040" (+.003/ -.003) thickness
 Nut-Self-Locking, clinch type, corrosion resistant alloy steel per AMS5640 (type 303)
 Performance per MIL-N-25027

FINISH: Retainer-Alodine per MIL-C-5541
 Nut- Dry Film Lube applied per MIL-L-46010

