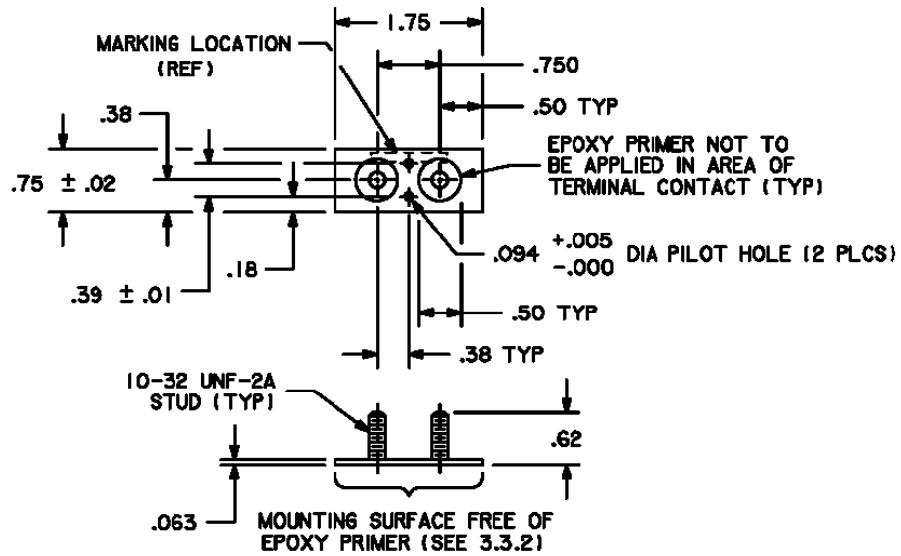




Exceeding Your Expectations



Material:

Studs: Carbon steel, tensile strength 50,000 P.S.I., minimum  
Board: Aluminum alloy 6061-T6 per AMS-QQ-A-250/11.

Finish:

Studs: Cadmium plated per AMS-QQ-P-416, Type II, Class 2  
Board: Chemically conversion treat with iridite 14-2 per P.S. 13222. Finish with two coats of MMS 423 epoxy primer per P.S. 13375 except as shown in Figures 1 through 5. In addition, epoxy primer shall not be applied to the mounting side of the flange or to the mounting surface of the terminal boards.

DIMENSIONS IN INCHES: TOLERANCES UNLESS OTHERWISE SPECIFIED: X.XX ± 0.03; X.XXX ± 0.010; ANGLES ± 0.5°  
DOCUMENT AND ITS CONTENTS ARE PROPRIETARY INFORMATION TO STROCO AND ITS AFFILIATES. USE WITHOUT AUTHORIZATION IS PROHIBITED.

CAGE NO. 19904	TITLE <b>TERMINAL BOARD</b> DRAWING FOR INTERNAL USE ONLY.	PART NUMBER 102B REV A 04/01/06
-------------------	--	---------------------------------------

