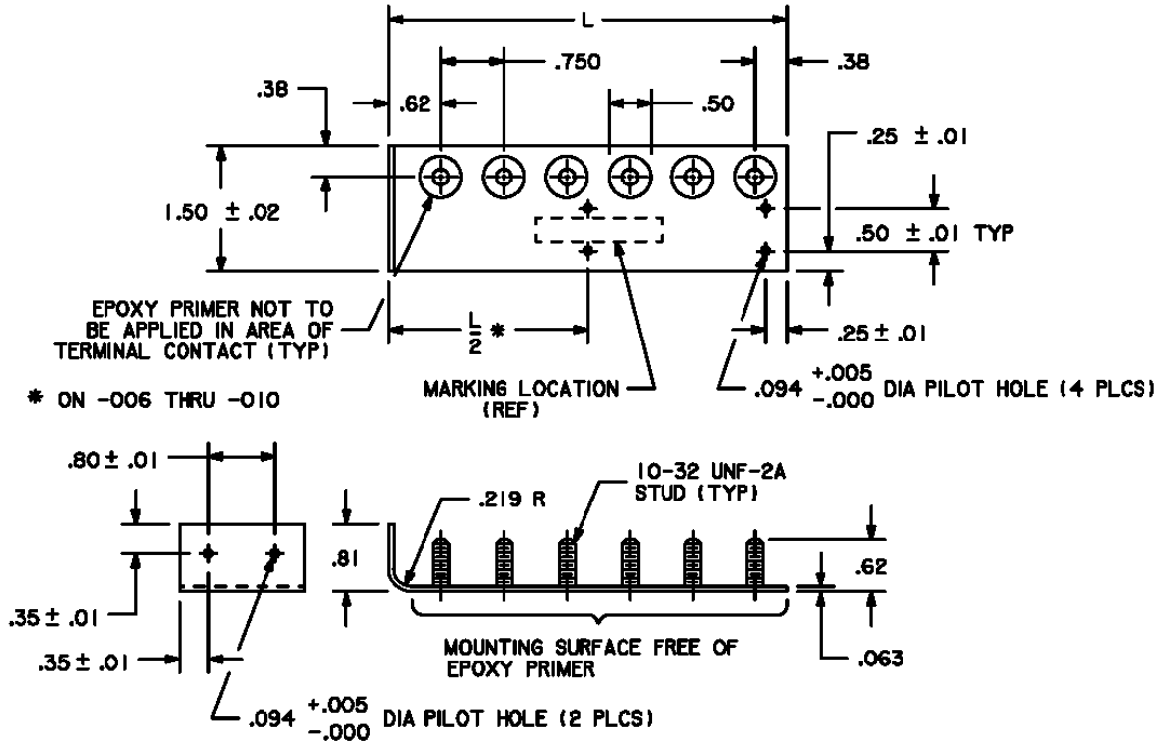


STROCO



Left Flange- Shown Part Number	Right Flange- Opposite Part Number	No. of Terminals	L
202L	202R	2	1.75
203L	203R	3	2.50
204L	204R	4	3.25
205L	205R	5	4.00
206L	206R	6	4.75
207L	207R	7	5.50
208L	208R	8	6.25
209L	209R	9	7.00
210L	210R	10	7.75

Material:

Studs: Carbon steel, tensile strength 50,000 P.S.I., minimum
 Board: Aluminum alloy 6061-T6 per AMS-QQ-A-250/11.

Finish:

Studs: Cadmium plated per AMS-QQ-P-416, Type II, Class 2
 Board: Chemically conversion treat with iridite 14-2 per [P.S. 13222](#). Finish with two coats of [MMS 423](#) epoxy primer per [P.S. 13375](#) except as shown in Figures 1 through 5. In addition, epoxy primer shall not be applied to the mounting side of the flange or to the mounting surface of the terminal boards.

DIMENSIONS IN INCHES: TOLERANCES UNLESS OTHERWISE SPECIFIED: X.XX ± 0.03; X.XXX ± 0.010; ANGLES ± 0.5°
 DOCUMENT AND ITS CONTENTS ARE PROPRIETARY INFORMATION TO STROCO AND ITS AFFILIATES. USE WITHOUT AUTHORIZATION IS PROHIBITED.

CAGE NO. 19904	TITLE	PART NUMBER 20XL AND 20XR
	<p style="text-align: center;">TERMINAL BOARD</p> <p style="text-align: center;">DRAWING FOR INTERNAL USE ONLY.</p>	
		REV A 04/01/06

